



PHOTO: ULIANA GRISHINA

Jewel in the heart of London: The roof terrace of Mansion House looks out over the Palace of Westminster.

FOR SALE

Edited by Inken Becker & Merle Wilkening. Presented by **ENGEL & VÖLKERS**. Ad section on pages 78 - 175.

The Top of London

In the heart of the British capital, heritage and prestige reign supreme in **Mansion House**. Originally designed by Horace Field, this carefully restored listed property awaits an exciting new chapter. TEXT: Merle Wilkening PHOTOS: Uliana Grishina

On the first floor of the five-storey building, the large impressive salon flows onto the billiard room next door.



Light marble and high vaulted ceilings
- mirrored for symmetry along a central
axis - give the house a palatial feel.



The expansive master bedroom on the second floor opens onto a semi-circular balcony. Directly adjacent to the master bedroom itself are two exceptional Tom Ford-inspired his-and-hers bathrooms. They boast the finest black and white marble, along with exquisite mirror features. More wellness opportunities await residents and guests alike in the pool and spa area on the lower ground floor.



The private spa, with a Jacuzzi, sauna and steam room, is the ideal haven to switch off from the hustle and bustle.



Some ten metres for swimming lengths:
The pool has been designed with green,
gold and bronze mosaic tiles.

Up on the third floor, a wooden staircase leads the way up still further. A skylight window folds open, out onto the roof terrace – where truly spectacular views over Central London await. Almost close enough to reach out and touch, Victoria Tower rises up majestically between brick façades and chimneys. Atop this, the tallest tower in the Palace of Westminster, the Union Jack can be seen fluttering in the wind.

Big Ben, one of London's most famous landmarks, soars skywards at the northern end of the resplendent British Parliament building. Gazing further out over the rooftops of the city, Westminster Abbey is also visible. Mansion House has truly esteemed neighbours, right in the very centre of London. Stood on the pavement outside the building on Cowley Street, there is no clue as to the magnificent views to be had from the roof. Yet still the imagination is set in motion – with an impressive Westminster façade that suggests an impressive grandeur dwells within.

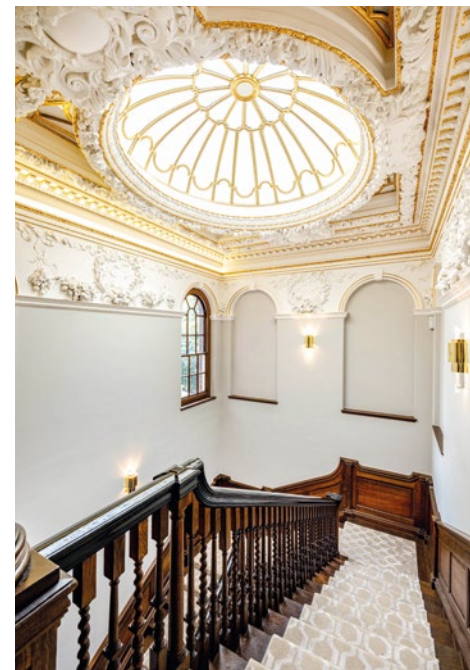
At the very heart of the British establishment, just a stone's throw from Parliament and the north bank of the River Thames, the five-storey Mansion House boasts a front façade that is over 15 metres wide, with an ornate gable. Grand stone pillars flank the heavy, wooden entrance doors. Decorative white stonework frames the red brickwork beautifully. The building was designed by the renowned London architect Horace Field and built in 1904, originally as the headquarters of the North Eastern Railway. In the 1980s, the building then served as the headquarters of the British Liberal Democrats, the party having moved into No. 4 Cowley Street shortly after being founded.

Decades on from this, the building has not only been given a new name – it has also, for the first time in its history, taken on a new identity as a private residence. Mansion House has been transformed into its renewed and splendid self by London-based luxury devel-

oper Saigol DDC. Its restoration has involved preservation of the property's original features, which include dark wood panelling in the main reception rooms and central stairwell. The project called on the expertise of master craftsmen who are also involved in the maintenance of some of Britain's greatest buildings – including Windsor Castle, the Royal Academy and the Houses of Parliament. The listed building has a wealth of striking historic features that enhance its charm and regal opulence. The reception hall boasts dark wood panels set against light marble floors and high vaulted ceilings with gold accents, with a beautiful symmetry along the central axis like an open book. An intricately decorated, gilded glass dome allows daylight to flood down onto the main staircase. There is also an elevator on hand to transport up to eight people to the upper levels.

With living interiors spanning some 1,000 square metres in total, Mansion House offers its owners and guests every comfort and convenience. On the ground floor, the large kitchen and breakfast area open out to one of two terraces. The spacious dining room seats up to 16 people. The panelled salon, which is almost ten metres wide with five splendid windows, takes up the majority of the first floor. Separated by double doors is the games room complete with a billiard table. The wine cellar, bar room and a second living room with original cornices and bay windows leave nothing to be desired when it comes to entertaining guests in the evenings. Dark herringbone parquet floors, opulent chandeliers, premium fabrics and light cream tones make sure that lavish style and comfort abound throughout the property.

The master bedroom with a balcony on the second floor boasts a walk-in dressing room with mirrored wardrobe fronts, in addition to two beautiful marble bathrooms. Guests can be accommodated in the other four sumptuous bedrooms, each also boasting an en suite bathroom. The house also presides over two bedrooms and bathrooms on the third floor for staff, together with a kitchenette. Owners and guests can relax in absolute opulence on the lower ground level. The private spa features a ten-metre pool, in addition to a Whirlpool, sauna, steam room and a fully equipped gym. The pool area opens out to a charming walled garden to the rear.



A real highlight in the central stairwell is the gilded glass dome with its opulent ornamentation.

ENGEL & VÖLKERS London (GB)
Contact Alexander Broadfoot
Tel. +44 203 283 87 00
E-mail london@engelvoelkers.com

London, United Kingdom
Price In excess of GBP 30 million
Interior approx. 1,028 m²
E&V ID W-02PKJ4

